

EXP76

SEMI-AUTOMATIC POWDER ACTUATED .27 CALIBER STRIP TOOL

Fastener Length: 2-1/2" Maximum for Loose Pin
1-1/4" Maximum for Collated Pin

OPERATORS MANUAL



WARNING




Read this manual carefully before operating this tool. Successful fastening applications require knowledge of tool use restrictions, load and fastener selection, tool operation, and disassembly and reassembly for daily cleaning.

Never operate this tool in a flammable atmosphere.

This powder actuated tool is to be used only by operators who are qualified and licensed for this particular tool.

OPERATING PRECAUTIONS

 Failure to follow these precautions may result in severe injury.

1. Safety first, never point the tool at anyone.
2. Never cock the tool against hands.
3. Always unload tool prior to any disassembly, cleaning, work breaks or storage.
4. Never leave the tool unattended, store under lock & key.
5. Never load the tool until you are ready to use it.
6. Always insert fastener before cocking the tool.
7. If a load fails to fire, hold the tool firmly against the work surface for thirty (30) seconds. If the tool still fails to fire, release the trigger and let the tool back some from the work surface. Reposition the tool against the work surface, depress it and pull the trigger again. If the load still does not fire, wait another thirty (30) seconds, remove the tool from the work surface carefully while keeping it pointed in a safe direction. Remove the load from the tool and carefully dispose of it in a container of water. Never leave unfired loads on the floor or work surface. Always dispose of them properly.
8. Always inspect the tool prior to use to make sure that the tool is in good working order, has no fractured or broken parts, and that there are no obstructions in the barrel or load chamber.
9. If the tool does not work properly or is in need of repair, remove it from service immediately, tag it as NEEDS REPAIR and contact a distributor for repair.
10. Never modify any powder actuated tool.
11. Do not mix load colors and types.
12. Clean and inspect the tool daily or more often if necessary.
13. The user and any other persons in the immediate vicinity must wear safety goggles  and ear protection . Use the spall guard whenever possible.
14. A warning sign with the following text must be erected:
 "Danger! Powder Actuated Tool in use" where P.A.T. tools are in use.
15. Always store the tool in a secure and locked area when not in use.

REMEMBER SAFETY IS IN YOUR HANDS.

OPERATING INSTRUCTIONS

●Shooting Collated Pins



1. Pull the "Push Botton" to the end of magazine.



2. Insert the collated pins into the bottom of the magazine and move it as close to the top as possible.



3. Release the "Push Botton" against the pins and secure the position.



4. Insert the powder load strip from the end of handle until flush with the bottom. Always insert from the bottom of the tool and remove from the top.



5. Press the tool firmly and squarely against the work surface, depress the tool completely and pull the trigger. Hold tool perpendicular for best fastening.



6. Hold the magazine and pull out barrel to its fully extended length then retract barrel, so the pin and load advanced. Repeat steps 1~6 until all the loads are used up.

●Shooting Loose Pins



1. Pull the “Push Botton” to the end of magazine.



2. Insert the pin into the muzzle and secure the pin inside the tool.



3. Insert the powder load strip from the end of handle until flush with the bottom. Always insert from the bottom of the tool and remove from the top.

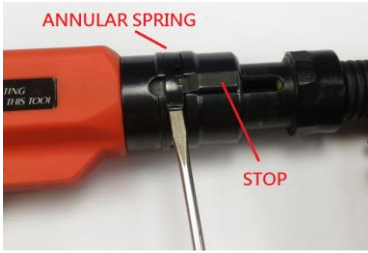


4. Press the tool firmly and squarely against the work surface, depress the tool completely and pull the trigger. Hold tool perpendicular for best fastening.

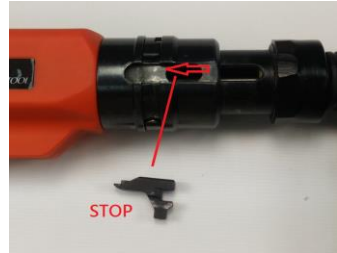


5. Hold the magazine and pull out barrel to its fully extended length then retract barrel, so the pin and load advanced. Repeat steps 1~5 until all the loads are used up.

DISASSEMBLY



1. Using screw driver to lift end of annular spring and rotate toward the top of the tool so the stop is uncovered.



2. Push stop towards rear of tool and remove.



3. Pull barrel assembly out of housing. Unscrew muzzle cap. Pull buffer out of muzzle cap. Inspect and replace if buffer is worn.

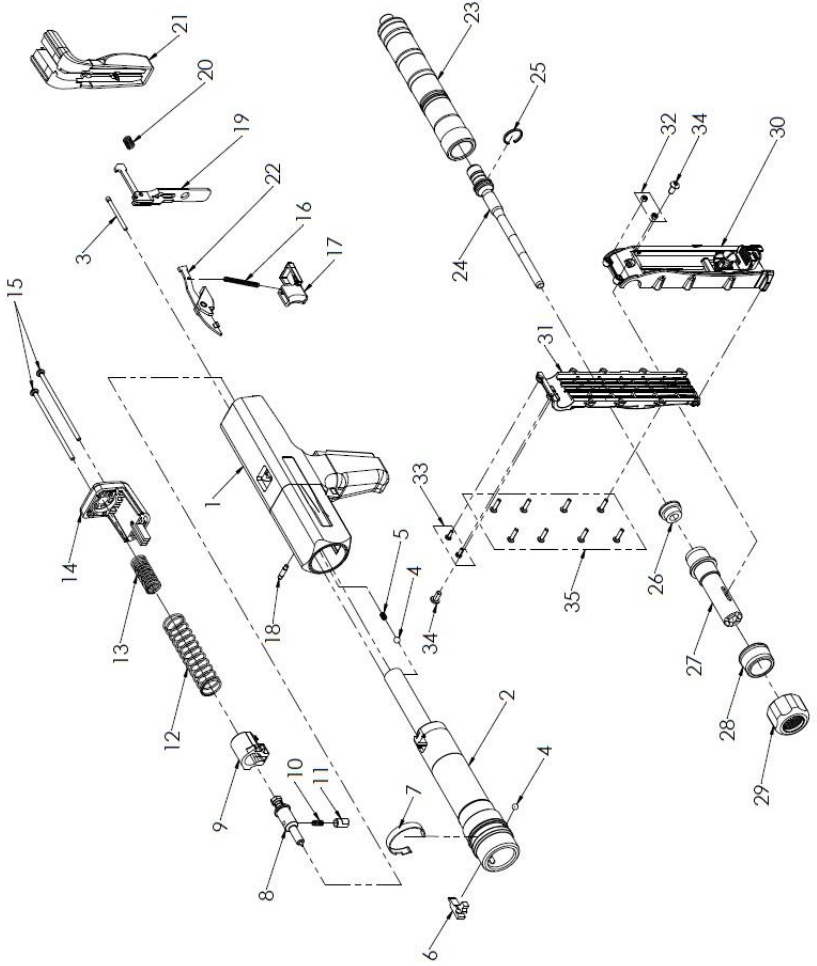


4. Remove piston assembly from barrel.

REASSEMBLY

1. Push the piston into the barrel, in reverse order of drawing #4 above.
2. Insert buffer in muzzle cap. Screw muzzle cap to barrel assembly. Insert barrel into housing (make sure that the stop slot in the barrel is aligned with the stop slot in the tool body), in reverse order of drawing #3 above.
3. Insert stop into slot on outer liner assembly and push stop towards front of tool, in reverse order of drawing #2 above.
4. Rotate the annular spring until stop is covered and held in place, in reverse order of drawing #1 above.

PARTS SCHEMATIC & LIST



ITEM No.	PART No.	DESCRIPTION
1	505001-1	HOUSING
2	502100	OUTER LINER ASSEMBLY
3	501104	PUSH PIN
4	301013	BALL SETTER
5	501106	SPRING BALL SET
6	501107	KEY STOP
7	301014	ANNULAR SPRING
8	501300	FIRING PIN ASSEMBLY(INCLUDES PIN,SPRING,NUT,WASHER)
9	501317	FIRING PIN GUIDE
10	301047	SPRING,SEAR
11	501319	SEAR
12	501320	SPRING,FIRING PIN GUIDE
13	501321	SAFETY SPRING,FIRING PIN
14	490735	REAR PAD
15	501423	BOLT
16	301531	ADVANCE SPRING
17	490533	TRIGGER
18	501526	TRIGGER PIN
19	502600	ROCKER ARM ASSEMBLY (INCLUDES ROCKER ARM,ROCKER ARM PIN, AND ROCKER ARM HOLDER)
20	501733	ROCKER ARM SPRING
21	490700	HANDLE PAD ASSEMBLY
22	501500	ADVANCE ASSEMBLY(HOLDER,BAR,TUBE)
23	490316	BARREL
24	490323	PISTON ASSEMBLY(INCLUDES RING)

25	490322	RING
26	490314	PLASTIC BUFFER
27	490331	MUZZLE CAP
28	490302	SPACER
29	490301	RETENTION COLLAR
30	490812	TOP MAGAZINE PIECE
31	490813	BOTTOM MAGAZINE PIECE
32	490814	M3 NUT
33	490815	M3 ROUND HEAD SCREW
34	490817	SCREW ON MUZZLE CAP
35	490818	3.5 x 16mm WOOD SCREW

CLEANING

After the front end of tool is completely disassembled, clean all parts with the brushes provided. Spray all parts with lubricant. Let it sit for a moment and then wipe dry before reassembly. **CAUTION: DO NOT USE ANY KIND OF LUBRICANT ON THE MAIN HOUSING OF THE TOOL. DRY BRUSH ONLY.** This is the perfect time to inspect your tool for damage or excessive wear. If defective or excessively worn parts are found, replace them immediately or remove the tool from service until they can be replaced.

APPLICATION RESTRICTIONS

1. Always make test fastenings with the lowest power load or power level & increase as proper penetration requires, overdriving results from too strong a load or power level, too short a fastener, or a work surface that is too soft.
2. Never use a tool in an explosive or flammable area.
3. Fasteners should not be driven into spalled areas.
4. Never attempt to fasten into very hard or brittle materials; surface-hardened or high tensile strength steel, glazed tile, cast iron, glass block, natural rock, face brick or hollow tile.
5. Never fasten through a predrilled hole.
6. Never fasten into concrete closer than 3 inches from an unsupported edge unless the specific application is approved.
7. Fasteners shall not be driven into concrete where the thickness is less than 3 times the penetration of the fastener shank.
8. Fasteners shall not be driven closer than 1/2" from the edge of steel & never into steel less than 1/8" thick.

FASTENER PENETRATION GUIDE

SOFT MASONRY	Cinder or Concrete block, etc.	1" to 3" penetration
AVG. CONCRETE	Poured Concrete, etc.	3/4" to 3" penetration
DENSE CONCRETE	Pre Stressed/pre-cast concrete	5/8" to 1-1/4" penetration
STEEL	Structural steel, etc.	3/16" to 1/2" penetration

LOAD SELECTION GUIDE

.27 cal loads in 10 load magazines

Description / Color	Power Level
#3 / GREEN	LIGHT
#4 / YELLOW	MEDIUM
#5 / RED	HEAVY

TROUBLE SHOOTING CHART

PROBLEM	POSSIBLE CAUSE	REMEDY
TOOL FAILS TO FIRE	BAD POWER LOAD	CHANGE TO A NEW LOAD STRIP
POWDER MAGAZINE FAILS TO ADVANCE PROPERLY	DIRTY OR DAMAGED ADVANCE MECHANISM	DRY CLEAN WITH BRUSH &/OR AIR. DO NOT LUBRICATE. IF THERE IS STILL A PROBLEM. CONTACT YOUR DISTRIBUTOR.
	WORN OR MISSHAPED POWDER MAGAZINE	REMOVE MAGAZINE FROM TOP OF TOOL & INSERT A NEW MAGAZINE
REDUCTION OR LOSS OF POWER	WORN PISTON RING	REMOVE PISTON AND REPLACE PISTON RING--CLEAN TOOL AT THIS TIME
PISTON HANGS OUT END OF THE TOOL	BROKEN PISTON	REPLACE PISTON--CLEAN TOOL AT THIS TIME
MOVEMENT OF BARREL IS ROUGH OR BINDS	LACK OF PROPER CLEANING	CLEAN TOOL ACCORDING TO INSTRUCTIONS IN THE MANUAL. REPLACE DAMAGED PARTS.
TOOL DOES NOT DEPRESS COMPLETELY	TOOL NOT PROPERLY ASSEMBLED	DISASSEMBLE TOOL BARREL ASSEMBLY AND REASSEMBLE, MAKING SURE THAT PARTS ARE ALIGNED PROPERLY. IF TOOL STILL FAILS TO OPERATE PROPERLY, CALL YOUR DISTRIBUTOR.

AS WITH ANY FINE TOOL, PROPER MAINTENANCE IS ABSOLUTELY NECESSARY FOR THE TOOL TO OPERATE SAFELY AND EFFICIENTLY. DAILY CLEANING IS ADVISED. IN EXTREME USE CASES IT MAY BE NECESSARY TO CLEAN THE TOOL MORE OFTEN.

